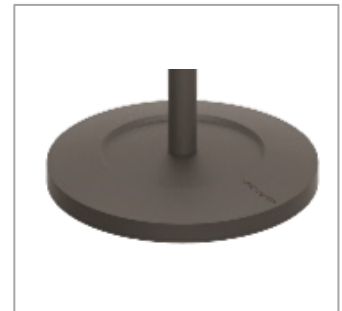
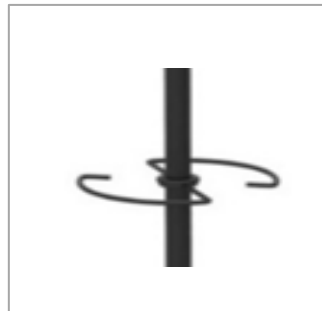




Ref : PMWIND

A coat stand with elliptical shapes

The new WIND coat stand was designed by combining different materials to give it a very contemporary style. It is composed of 6 wide wooden pegs, an umbrella holder and a weighted base. The elegant and refined finish gives this coat stand a unique design and it will fit perfectly into your workspaces.



PRODUCT BENEFITS:

- ▲ Combination of materials for a trendy design (black steel and wood)
- ▲ 6 large wooden flat pegs for a perfect care of the clothes
- ▲ Smart umbrella holder (6) and water retainer to catch drips
- ▲ Weighted crossed base for extra-stability (5kg)
- ▲ Quick and easy assembly system without tools.



Quand le beau rejoint l'utile *When beauty meets utility*

TECHNICAL SPECIFICATIONS	
Reference	PMWIND
EAN	N/A
Materials	Steel and wood
Number of pegs	6
Product dimensions	Base Ø 35,5cm H 175 cm Tube : Ø 38 mm
Packaging dimensions	60x38x10 cm
Umbrellas capacity	6
Estimated assembly time without tools	5 minutes
Optimized packaging	Yes, 1 compact packaging
Colors	Black and clear wood pegs
Other information	French creation Made in PRC

